

FY 22-23	
Construction Water per 1,000 Gallons	
Up to 10,000	\$10.00
10,0001 to 20,000	\$12.00
20,0001 to 30,000	\$14.00
30,001 and above	\$16.00
Monthly Admin Fee	\$20.00
Hydrant Meter for Construction	\$50.00



FY 22-23	
WATER METERS	
3/4" Ally	\$680.00
1"	\$410.00
1 1/2" SR	\$650.00
1 1/2" OMNI C-2	\$1,560.00
1 1/2" OMNI T-2	\$1,050.00
2" OMNI SR	\$850.00
2" OMNI C-2	\$1,750.00
2" OMNI T-2	\$1,230.00
4" OMNI C-2	\$3,848.00
4" OMNI T-2	\$2,985.00
6" OMNI C-2	\$6,645.00
6" OMNI T-2	\$5,370.00
12" Meter	\$12,150.00
12" Meter w/ Radio	\$12,310.00
3/4"	\$300.00
MXU Radio	\$160.00

Meter Wiring	
First 25 ft	FREE
After 25 ft	\$.25 per ft
Meter Ends	\$15 per set

FY 22-23	
WATER CONNECT & TAPPING	
3/4 Inch Water Service	\$1,250.00
1 Inch Water Service	\$1,500.00
1 1/2 Inch Water Service	\$2,000.00
2 Inch Water Service	\$3,500.00
4 Inch Water Service	\$7,750.00
6 Inch Water Service	\$12,750.00
8 Inch Water Service	\$18,000.00
10 Inch Water Service	\$25,000.00
12 Inch Water Service	\$32,000.00

FY 22-23	
WASTE WATER/SEWER CONNECTION & TAPPING	
3/4 Inch Water Service	\$1,500.00
1 Inch Water Service	\$1,800.00
1 1/2 Inch Water Service	\$2,450.00
2 Inch Water Service	\$4,300.00
4 Inch Water Service	\$9,650.00
6 Inch Water Service	\$15,900.00
8 Inch Water Service	\$22,500.00
10 Inch Water Service	\$31,250.00
12 Inch Water Service	\$38,250.00

FY 22-23	
COMPOST CHARGES	
Compost Per Cubic Yard (One Yard Minimum)	\$40.00
Wood Chips/Mulch per Cubic Yard (One Yard Minimum)	\$30.00
Curbside Delivery - within City limits	\$20.00

THREE WAYS TO PAY:

- Pay at the Compost site at the time of Pickup
- Pay at Public Works and bring the receipt to the site
- Pay at City Hall and bring the receipt to the site

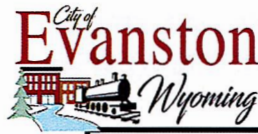


Residents may haul their YARD WASTE ONLY to:

591 Union Road (Across from Union Tank Car)

GENERAL UTILITY CHARGES

Late and delinquent payment penalty is one and one half percent (1.5%) per month



1200 MAIN STREET EVANSTON, WY
307-789-6300

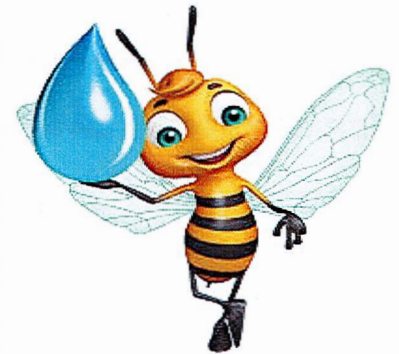
	FY 22-23
SERVICE RESTORATION	
Account Deposit	\$100.00
Voluntary Turn on	\$20.00
Inspection	\$20.00
Delinquent Turn on	\$50.00
Delinquent Turn on after 3:30	\$75.00
Repair / Frozen Meters - Freeze Plate	\$50.00
Construction Water / 1000 Gal	\$10.00
Monthly Fee for Construction Water	\$20.00
Meter for Water Construction - Hydrant	\$50.00
Min Charge for Construction Water (up to 2000 Gal)	\$20.00

	FY 22-23
STORMWATER FUND	
Monthly Fee for Each Service	\$5.20
Onsite Detention Stormwater per acre	\$500.00
Offsite Detention Stormwater per acre	\$2,500.00

WATER FUND

3/4 & 1	Inch Residential Line	\$9.64	\$7.23
1	Inch Commercial Line	\$16.95	\$12.71
1 1/2	Inch Line	\$31.48	
2	Inch Line	\$50.49	
4	Inch Line	\$123.48	
6	Inch Line	\$215.50	
12	Inch Line	\$380.00	
Consumption Rate 1,000 -10,000 Gal		\$2.30	\$1.73
Consumption Rate 10,001 - 20,000 Gal		\$2.65	\$2.08
Consumption Rate 20,001 -30,000 Gal		\$3.00	\$2.78
Consumption Rate 30,001 and above		\$3.35	\$3.13
Unmetered Flat Rate		\$35.00	
Jul, Aug, Sept, Oct		\$75.00	
Non-Potable / 1000 Gal		\$1.40	
City of Evanston owned meters for sprinklers per 1000 Gal		\$0.70	
Fire Dept Water for Training / 1000 Gal		\$0.70	
Bear River JPB Hydrant Flushing/ 1000 Gal		\$0.70	

	FY 22-23	SENIOR
WASTE WATER FUND		
3/4 & 1	Inch Residential Line	\$8.42 \$6.32
1	Inch Commercial Line	\$21.04 \$15.78
1 1/2	Inch Line	\$33.66
2	Inch Line	\$50.50
4	Inch Line	\$113.60
6	Inch Line	\$193.53
12	Inch Line	\$348.00
Consumption Rate / 1000 Gallons		\$1.85 \$1.40
Except Residential, Church and School accounts. They shall be billed an average amount based on the actual consumption during November - January for each month for the months of February - January		
Unmetered flat rate per utility service unit, plus capital replacement cost.		\$18.00



	FY 22-23	SENIOR
SANITATION FUND		
105 Gallon- Once a Week	\$13.86	\$10.40
Each Additional Pickup	\$13.86	
300 Gallon - Once a Week	\$19.63	\$14.72
Each Additional Pickup	\$19.63	
Involuntary Pickup	\$31.50	
Special Pickup	\$21.00	
Multi-Dwelling Units		
Individual	\$13.86	\$10.40
Combined	\$13.86	
Pickup for Delinquency		\$15.00
Container for Special Event (No Landfill Charge)		\$15.00
Community Event Pickup as authorized by Mayor		Variable
MONTHLY LANDFILL		
105 Gallon Container		\$8.20
Each Additional Pickup		\$8.20
300 Gallon Container		\$17.15
Each Additional Pickup		\$17.15